

# PLEDGE TO OUR KEIKI

Taking care of our island home



## WAHI PANA CREATIVE CHALLENGE



*Create a 2-3 minute video on a wahi pana (sacred site) that is special to you, and how you and others care for it. It can be any style you want, but should include:*



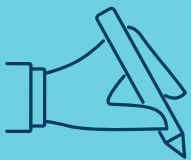
**WHAT IS YOUR WAHI PANA AND WHY?** Tell us about a place in Hawai'i that is special to you, your family, or culture, that you have a personal connection to. Why is it important to you?



**HOW DO YOU CARE FOR YOUR WAHI PANA?** Do you keep it clean, visit often, or give back to it somehow? Share what actions you take in the video.



**CALL TO ACTION** Your video should include a "call to action," for others to care for their wahi pana across Hawai'i and beyond by signing the Pledge to Our Keiki (QR code below)



**GET STARTED & LEARN MORE:  
READ & SIGN THE PLEDGE TO OUR KEIKI**



We want your video to inspire others to  
live aloha and mālama Hawai'i  
We can't wait to see your submissions!

Contest rules + updates: [olelo.org/yxc2023](https://olelo.org/yxc2023)  
#AlaskaCARElines @pledgetoourkeiki